



www.carlinwhite.com

5908 DOCKERS SUITE 100 HOUSTON, TX 77057
713.783.8040 FAX 713.783.7774

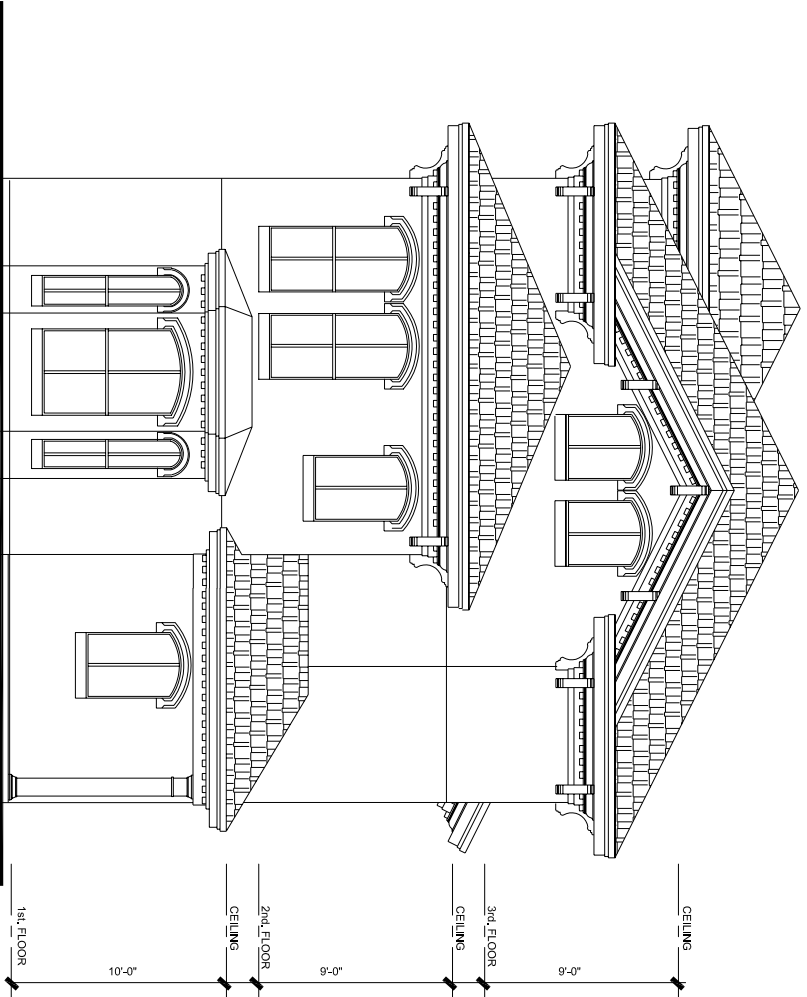
drawing standards

01 12-12-25 ISSUED FOR REVIEW

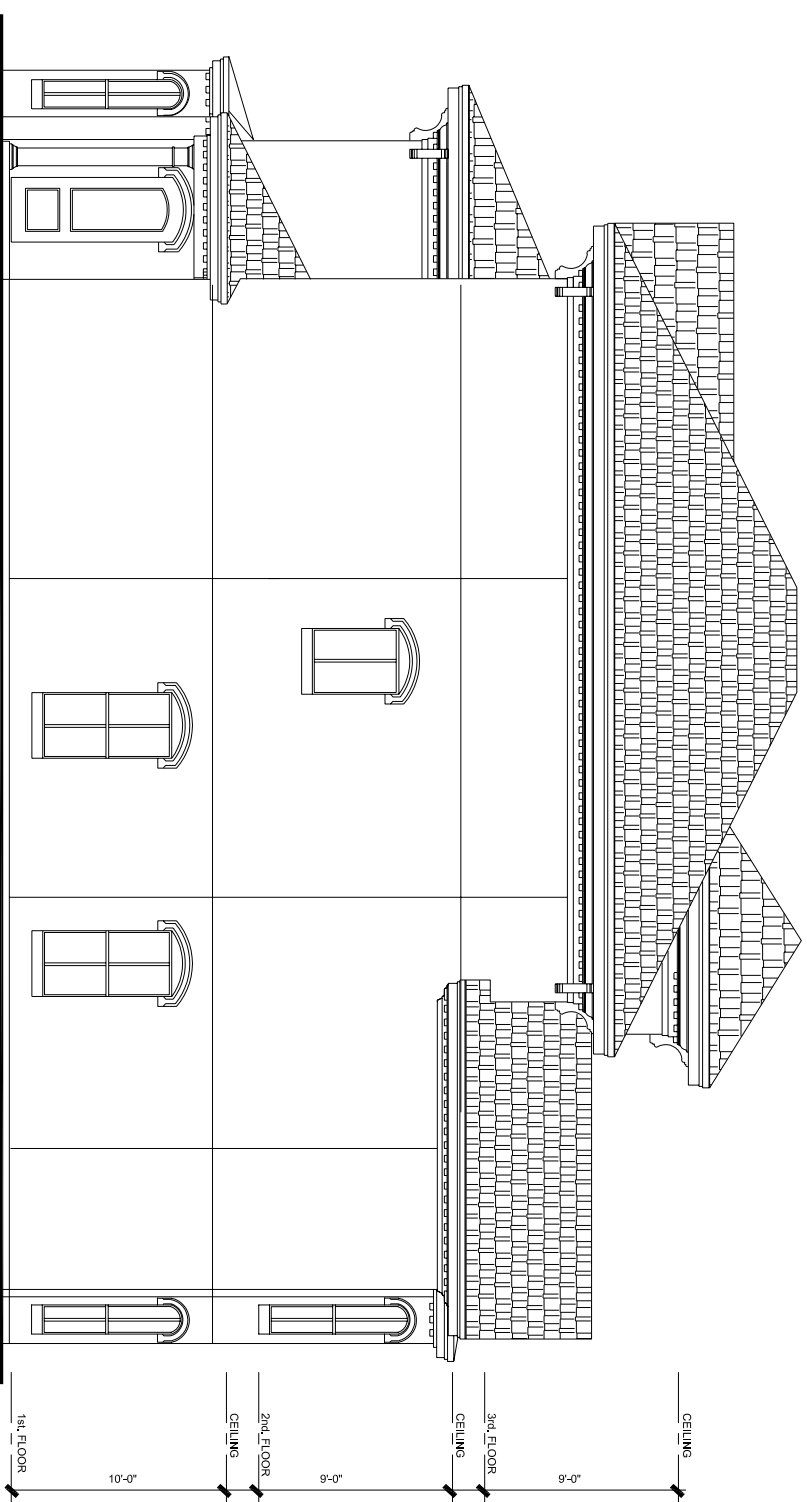


GENERAL NOTES

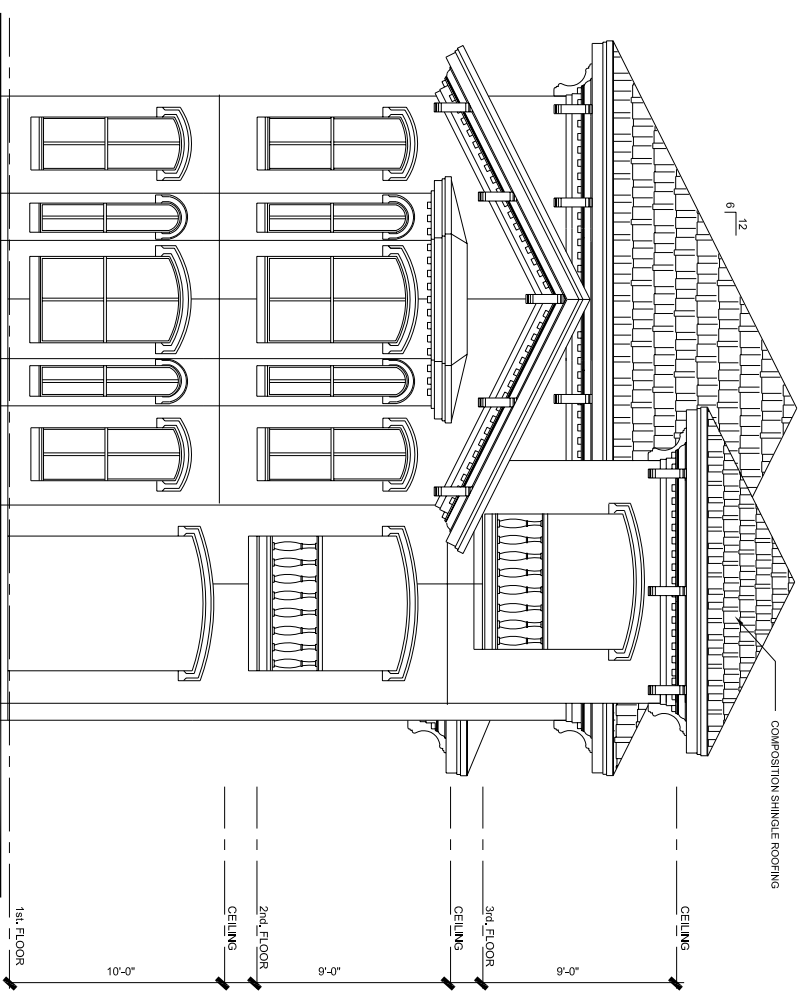
The Architect has made every effort to set forth in the Contract Documents the complete scope of the work. The Contractor is never the less cautioned that minor omissions and errors may exist in these drawings and that the Contractor is responsible for providing a complete facility and improvements in accordance with the intent of these documents. It will be the responsibility of the Contractor to coordinate all work with the City and to obtain the attention of the Architect in writing, prior to the submission of proposals or to commencement. In accordance with the rules and regulations of the Texas Board of Architectural Examiners these documents may not be used for construction unless the Seal of the Architect is present. The drawings prepared by Carlin / White for this project are instruments of the Architect's service for the use solely of the Contractor. The Architect shall be deemed the author of these documents and shall retain all common law, statutory and other reserved rights, including the copyright.



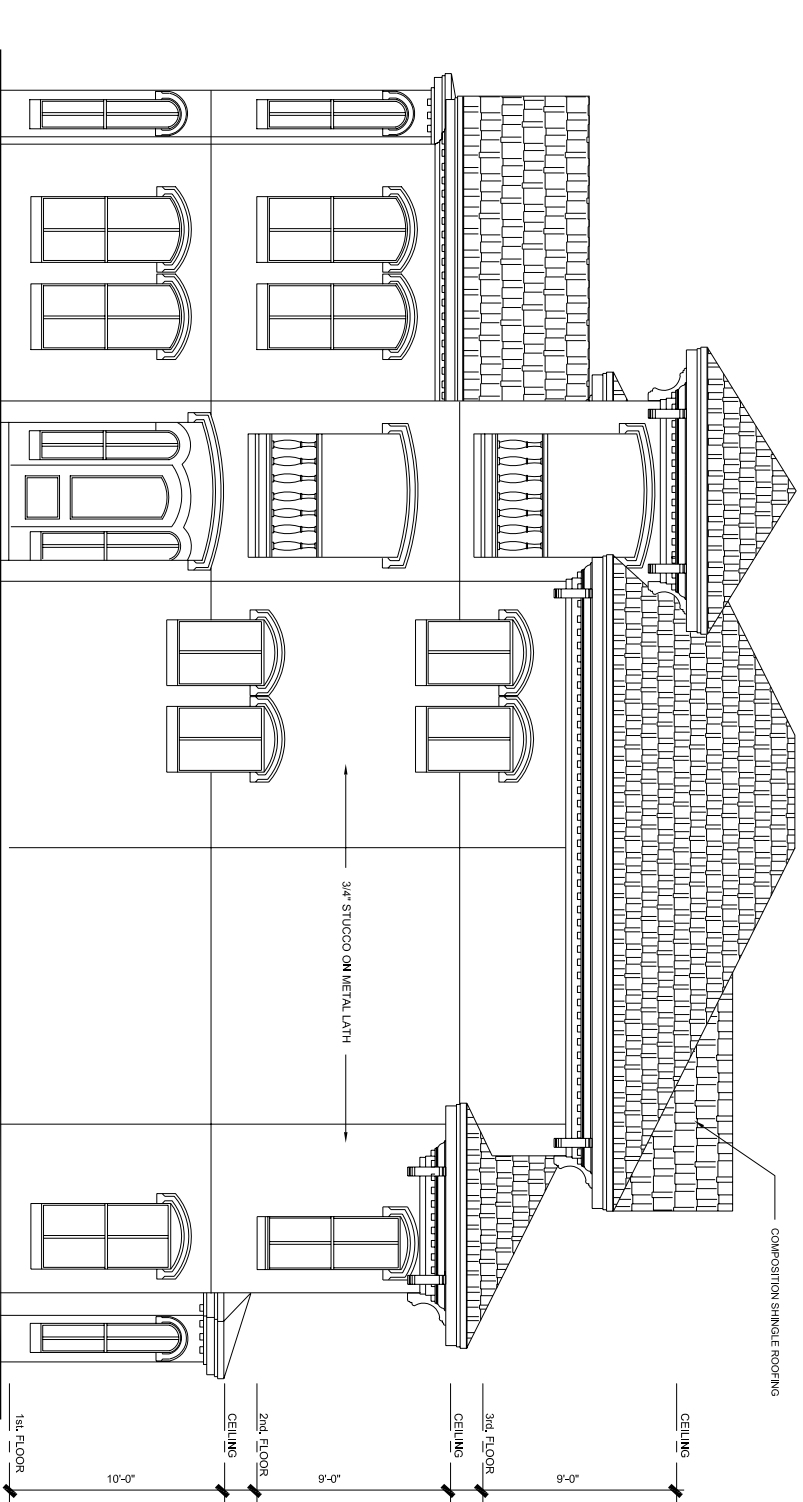
Rear Elevation



Left Side Elevation



Front Elevation



Right Side Elevation

Stonemark Builders reserves the right to change plans, specifications, and pricing without notice. Please consult your sales executive for current information.

Villa Siena
Living Area
3,345 S.F.

project
Garden Villa Homes
Tract H
East Shore Sec. 3
The Woodlands



sheet name
B 2
Elevations