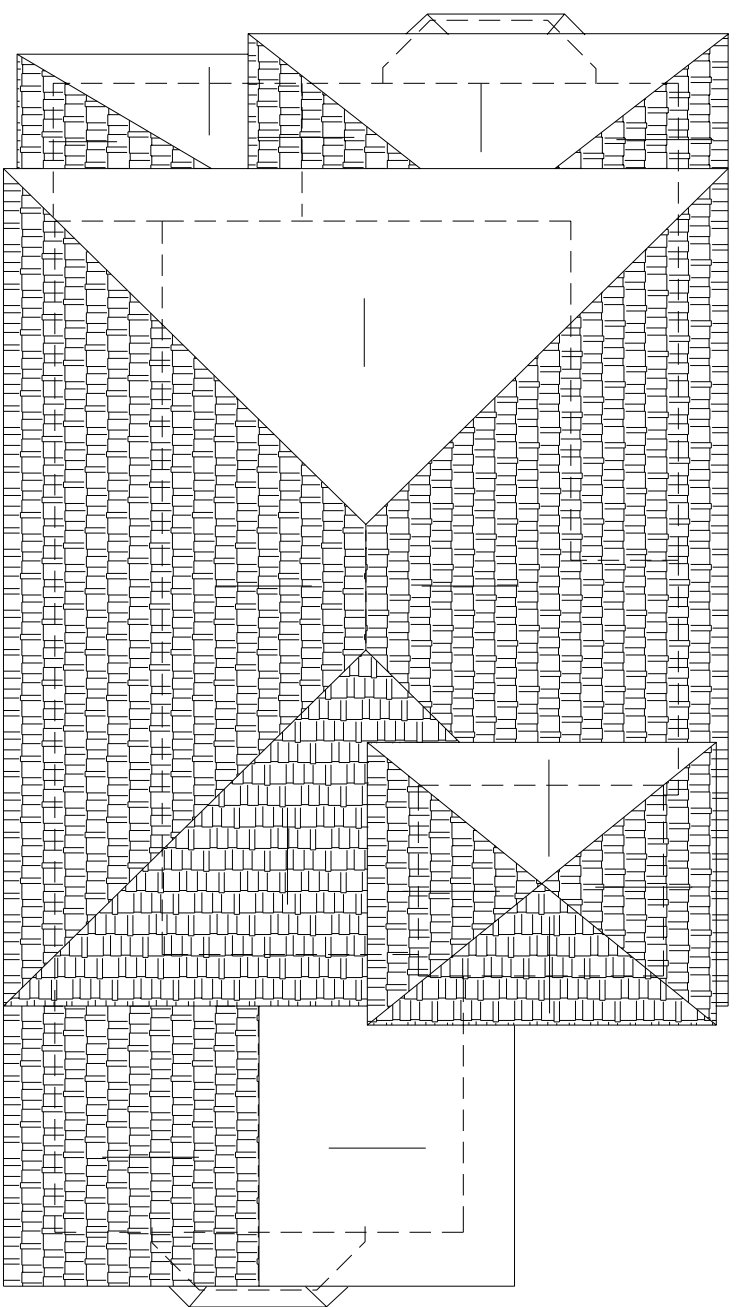




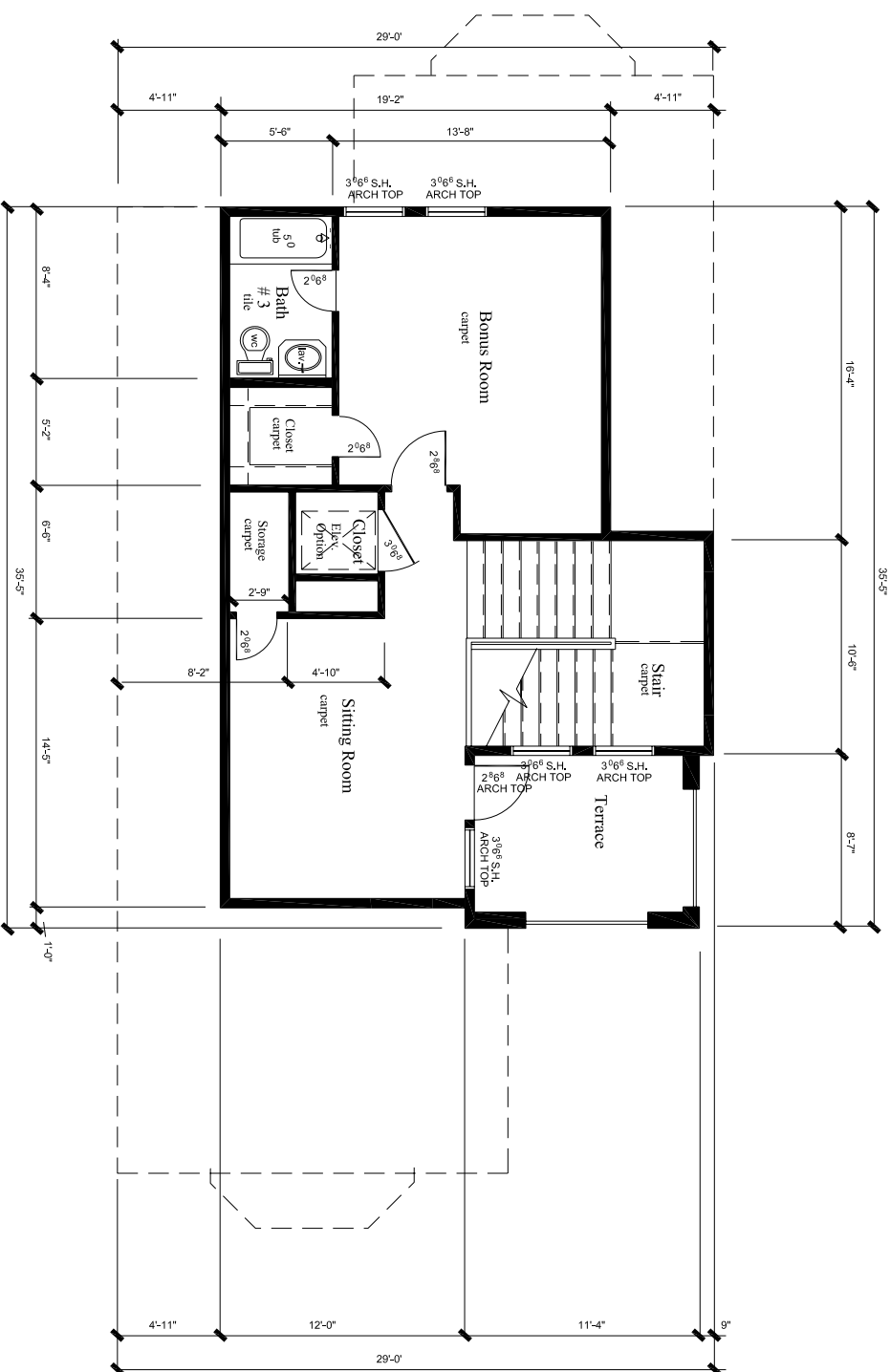
The Architect has made every effort to set forth in the Contract Documents the complete scope of the work. The Contractor is never the less cautioned that minor omissions, omissions, and errors may exist. The Contractor shall be responsible for identifying and correcting any errors and improvements in accordance with the intent of these documents. It will be the responsibility of the Contractor to coordinate with the Architect in writing, prior to submission of proposals or to commencement of construction, with the rules and regulations of the Texas Board of Architectural Examiners these documents may not be used for construction unless the Seal of the Architect of Record, property number and signed by the Architect of Record.

The drawings prepared by Carlin / White for this project are instruments of the Architect's services for the use solely by the Contractor and shall remain the property of the Architect and shall retain all common law, statutory, and other reserved rights, including the copyright.



Roof Plan

SCALE: 1/4"=1'-0"



Third Floor Plan

SCALE: 1/4"=1'-0"

Stonemark Builders reserves the right to change plans, specifications, and pricing without notice. Please consult your sales executive for current information.

Villa Siena
Living Area
3,345 S.F.

project
Garden Villa Homes
Tract H
East Shore Sec. 3
The Woodlands



Sheet Name:
B2
Floor Plan

Date: 07-10-15
Project No.: 08033
Reviewed: CHC
A-2