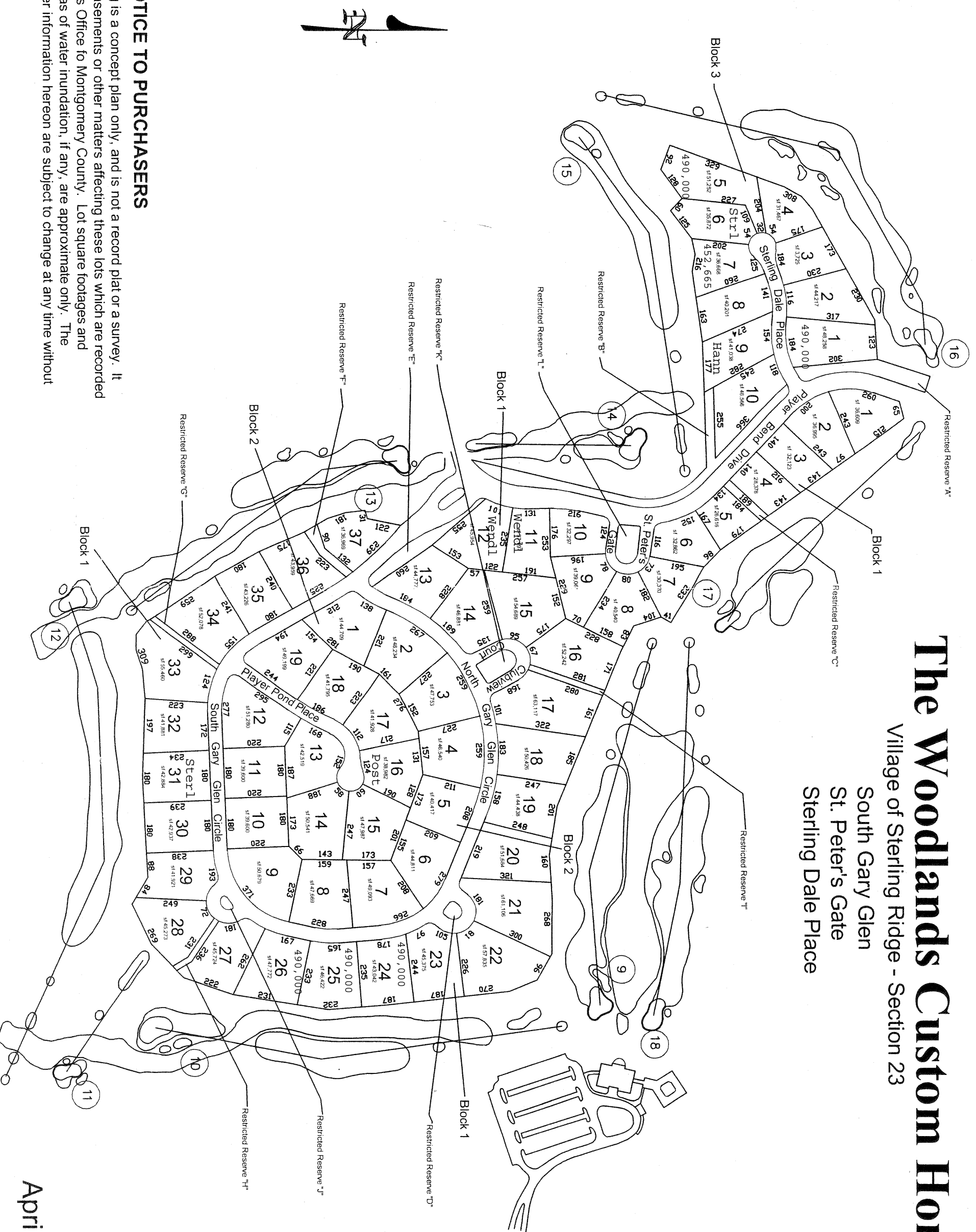


The Woodlands Custom Homes

Village of Sterling Ridge - Section 23
South Gary Glen
St. Peter's Gate
Sterling Dale Place



NOTICE TO PURCHASERS

This map or drawing is a concept plan only, and is not a record plat or a survey. It does not show all easements or other matters affecting these lots which are recorded in the County Clerk's Office to Montgomery County. Lot square footages and dimensions and areas of water inundation, if any, are approximate only. The boundaries and other information hereon are subject to change at any time without notice.

April 2002